

# CT/MR Split Ring Applicator Set



Innovative technology and enhanced clinical advantages that facilitate CT and MR based brachytherapy planning.

## Cervix, Endometrium

### Well-Accepted Design

The CT/MR Split Ring Applicator's patented design combines the benefits of several other intracavitary applicators with the ability to be configured as a closed ring or split into four different diameter distances in either symmetric or asymmetric arrangements. The connecting bracket enables simple connection and easy confirmation of diameter settings with three clearly visible identifiers associated with physical detents to lock in the chosen position.

### Various Configurations

The Split Ring Applicator Combination Set includes configurations for 30°, 45° and 60° 'ring' angles with a variety of intrauterine tube lengths and disposable or optional reusable build-up caps to fit a wide variety of anatomies.

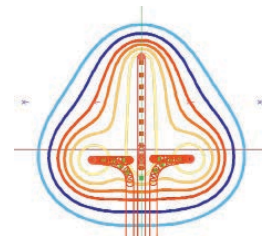
### MR Conditionality

All materials for this applicator, such as medical grade titanium, have been selected both to enable MR conditionality for enhanced planning and structural integrity, to give you the confidence for accurate placement and treatment.

### Features

- Split Ring symmetric diameters of 38 mm, 48 mm, 58 mm and 68 mm
- Reproducible geometry with diameter increments of as little as 5 mm based on single-side tube adjustment
- 3.2 mm intrauterine tubes with intrauterine sections of 20 mm, 40 mm, 60 mm and 80 mm for each of three angles (30°, 45°, 60°)
- Split Ring Applicators are CT compatible and MR conditional
- High quality – streak-free CT images for precise planning
- Lightweight yet sturdy titanium design
- Unique dose distribution flexibility and adjustability
- Individual insertion of right and left Split Ring tubes facilitates insertion in patients with a narrow introitus
- Packing may be obviated with the use of the included rectal retractor
- Expected lifetime is 5 years

- Optional CT/MR intrauterine smit sleeves
- Applicator available with connections for BEBIG Medical afterloaders, Varian and Elekta/Nucletron transfer tubes\*



Isodose



Split Ring with disposable caps



Sterilization tray with Split Ring Applicator Set components

# CT/MR Split Ring Applicator Set

## KBE-1401

### CT/MR Split Ring Applicator Combo Set, for BEBIG Medical afterloaders

(Item numbers are included for reordering purposes)

- CT/MR Split Ring, 30°, right tube (KBE-1401-30R)
- CT/MR Split Ring, 30°, left tube (KBE-1401-30L)
- CT/MR Split Ring Intrauterine Tube, 30°, L = 20 mm (KBE-1401-30-2)
- CT/MR Split Ring Intrauterine Tube, 30°, L = 40 mm (KBE-1401-30-4)
- CT/MR Split Ring Intrauterine Tube, 30°, L = 60 mm (KBE-1401-30-6)
- CT/MR Split Ring Intrauterine Tube, 30°, L = 80 mm (KBE-1401-30-8)
- CT/MR Split Ring, 45°, right tube (KBE-1401-45R)
- CT/MR Split Ring, 45°, left tube (KBE-1401-45L)
- CT/MR Split Ring Intrauterine Tube, 45°, L = 20 mm (KBE-1401-45-2)
- CT/MR Split Ring Intrauterine Tube, 45°, L = 40 mm (KBE-1401-45-4)
- CT/MR Split Ring Intrauterine Tube, 45°, L = 60 mm (KBE-1401-45-6)
- CT/MR Split Ring Intrauterine Tube, 45°, L = 80 mm (KBE-1401-45-8)
- CT/MR Split Ring, 60°, right tube (KBE-1401-60R)
- CT/MR Split Ring, 60°, left tube (KBE-1401-60L)
- CT/MR Split Ring Intrauterine Tube, 60°, L = 20 mm (KBE-1401-60-2)
- CT/MR Split Ring Intrauterine Tube, 60°, L = 40 mm (KBE-1401-60-4)
- CT/MR Split Ring Intrauterine Tube, 60°, L = 60 mm (KBE-1401-60-6)
- CT/MR Split Ring Intrauterine Tube, 60°, L = 80 mm (KBE-1401-60-8)
- CT/MR Universal Rectal Retractor (KBE-1209)
- Cervical Stop (KBE-0508-10)
- Support Wing (KBE-0605-20)
- Sterilization Tray (KBE-1107)
- Stainless Steel Allen Wrench (KBE-7311)
- Sealing Caps, (10 pcs) (LAZ17-03)
- Stainless Steel Ruler, L = 15 cm (KBE-7610)

### Required Items KBE-M1401

Qty.	Item	Part number
1	Transfer Tube, D = 3 mm, L = 1000 mm, Color code: green, Channel: 1	KBE-LAF1000-1
1	Transfer Tube, D = 3 mm, L = 1000 mm, Color code: yellow, Channel: 2	KBE-LAF1000-2
1	Transfer Tube, D = 3 mm, L = 1000 mm, Color code: blue, Channel: 3	KBE-LAF1000-3

### Optional Items

Item	Part number
Build-Up Caps, 5.0 mm x 5.0 mm, reusable, (2 pcs)	KBE-1305-01-01
Build-Up Caps, 5 mm x 7.5 mm, reusable, (2 pcs)	KBE-1305-01-02
Build-Up Caps, 7.5 mm x 5.0 mm, reusable, (2 pcs)	KBE-1305-01-03
Build-Up Caps, 7.5 mm x 7.5 mm, reusable, (2 pcs)	KBE-1305-01-04
Build-Up Caps, 5 mm x 10 mm, reusable, (2 pcs)	KBE-1305-01-05
Build-Up Caps, 10 mm x 10 mm, reusable, (2 pcs)	KBE-1305-01-06
No-Stich SMIT Sleeves, hard, for < 3.5 mm IU, single use, (10 pcs)	KBE-05-01

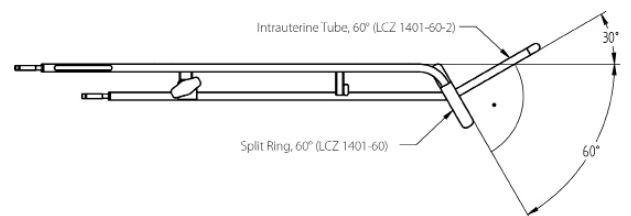
### For replacement orders:

Please order based on the 'ring angle':

CT/MR Split Ring, 30°, right & left tube with CT/MR Split Ring Intrauterine Tube, 30°

CT/MR Split Ring, 45°, right & left tube with CT/MR Split Ring Intrauterine Tube, 45°

CT/MR Split Ring, 60°, right & left tube with CT/MR Split Ring Intrauterine Tube, 60°



#### Manufacturer:

Mick Radio-Nuclear Instruments, Inc.  
 A BEBIG Medical Company  
 521 Homestead Avenue  
 Mount Vernon, NY 10550  
 USA  
 Phone 914 667 3999  
 Fax 914 665 8834  
 sales@micknuclear.com

#### Regional sales, marketing, and service in US

Klarity  
 600 Industrial Parkway  
 Heath, OH 43056  
 USA  
 Phone 740 788 8107  
 Fax 740 788 8109  
 info@klaritymedical.com  
 www.klaritymedical.com



# CT/MR Split Ring Applicator Set

## KBE-1401-30

### CT/MR Split Ring Applicator 30° Set, for BEBIG Medical afterloaders

(Item numbers are included for reordering purposes)

CT/MR Split Ring, 30°, right tube (KBE-1401-30R)  
 CT/MR Split Ring, 30°, left tube (KBE-1401-30L)  
 CT/MR Split Ring Intrauterine Tube, 30°, L = 20 mm (KBE-1401-30-2)  
 CT/MR Split Ring Intrauterine Tube, 30°, L = 40 mm (KBE-1401-30-4)  
 CT/MR Split Ring Intrauterine Tube, 30°, L = 60 mm (KBE-1401-30-6)  
 CT/MR Split Ring Intrauterine Tube, 30°, L = 80 mm (KBE-1401-30-8)  
 CT/MR Universal Rectal Retractor (KBE-1209)  
 Cervical Stop (KBE-0508-10)  
 Support Wing (KBE-0605-20)  
 Sterilization Tray (KBE-1107)  
 Stainless Steel Allen Wrench (KBE-7311)  
 Sealing Caps, (10 pcs) (KBE-17-03)  
 Stainless Steel Ruler, L = 15 cm (KBE-7610)

## KBE-1401-45

### CT/MR Split Ring Applicator 45° Set, for BEBIG Medical afterloaders

(Item numbers are included for reordering purposes)

CT/MR Split Ring, 45°, right tube (KBE-1401-45R)  
 CT/MR Split Ring, 45°, left tube (KBE-1401-45L)  
 CT/MR Split Ring Intrauterine Tube, 45°, L = 20 mm (KBE-1401-45-2)  
 CT/MR Split Ring Intrauterine Tube, 45°, L = 40 mm (KBE-1401-45-4)  
 CT/MR Split Ring Intrauterine Tube, 45°, L = 60 mm (KBE-1401-45-6)  
 CT/MR Split Ring Intrauterine Tube, 45°, L = 80 mm (KBE-1401-45-8)  
 CT/MR Universal Rectal Retractor (KBE-1209)  
 Cervical Stop (KBE-0508-10)  
 Support Wing (KBE-0605-20)  
 Sterilization Tray (KBE-1107)  
 Stainless Steel Allen Wrench (KBE-7311)  
 Sealing Caps, (10 pcs) (KBE-17-03)  
 Stainless Steel Ruler, L = 15 cm (KBE-7610)

## KBE-1401-45

### CT/MR Split Ring Applicator 60° Set, for BEBIG Medical afterloaders

(Item numbers are included for reordering purposes)

CT/MR Split Ring, 60°, right tube (KBE-1401-60R)  
 CT/MR Split Ring, 60°, left tube (KBE-1401-60L)  
 CT/MR Split Ring Intrauterine Tube, 60°, L = 20 mm (KBE-1401-60-2)  
 CT/MR Split Ring Intrauterine Tube, 60°, L = 40 mm (KBE-1401-60-4)  
 CT/MR Split Ring Intrauterine Tube, 60°, L = 60 mm (KBE-1401-60-6)  
 CT/MR Split Ring Intrauterine Tube, 60°, L = 80 mm (KBE-1401-60-8)  
 CT/MR Universal Rectal Retractor (KBE-1209)  
 Cervical Stop (KBE-0508-10)  
 Support Wing (KBE-0605-20)  
 Sterilization Tray (KBE-1107)  
 Stainless Steel Allen Wrench (KBE-7311)  
 Sealing Caps, (10 pcs) (KBE-17-03)  
 Stainless Steel Ruler, L = 15 cm (KBE-7610)

## Required Items

KBE-1401-30, KBE-1401-45, KBE-1401-60

Qty.	Item	Part number
1	Transfer Tube, D = 3 mm, L = 1000 mm, Color code: green, Channel: 1	KBE-LAF1000-1
1	Transfer Tube, D = 3 mm, L = 1000 mm, Color code: yellow, Channel: 2	KBE-LAF1000-2
1	Transfer Tube, D = 3 mm, L = 1000 mm, Color code: blue, Channel: 3	KBE-LAF1000-3

#### Manufacturer:

Mick Radio-Nuclear Instruments, Inc.  
 A BEBIG Medical Company  
 521 Homestead Avenue  
 Mount Vernon, NY 10550  
 USA  
 Phone 914 667 3999  
 Fax 914 665 8834  
 sales@micknuclear.com

#### Regional sales, marketing, and service in US

Klarity  
 600 Industrial Parkway  
 Heath, OH 43056  
 USA  
 Phone 740 788 8107  
 Fax 740 788 8109  
 info@klaritymedical.com  
 www.klaritymedical.com



# CT/MR Split Ring Applicator Set

## KBE-0605

### CT/MR Split Ring Applicator Combo Set, for Varian transfer tubes\*

(Item numbers are included for reordering purposes)

CT/MR Split Ring, 30°, left tube (KBE-0605-30-CSA-02)  
CT/MR Split Ring, 45°, left tube (KBE-0605-45-CSA-02)  
CT/MR Split Ring, 60°, left tube (KBE-0605-60-CSA-02)  
CT/MR Split Ring, 30°, right tube (KBE-0605-30-CSA-01)  
CT/MR Split Ring, 45°, right tube (KBE-0605-45-CSA-01)  
CT/MR Split Ring, 60°, right tube (KBE-0605-60-CSA-01)  
CT/MR Split Ring Intrauterine Tube, 30°, L = 20 mm (KBE-0605-30-TSA-02)  
CT/MR Split Ring Intrauterine Tube, 45°, L = 20 mm (KBE-0605-45-TSA-02)  
CT/MR Split Ring Intrauterine Tube, 60°, L = 20 mm (KBE-0605-60-TSA-02)  
CT/MR Split Ring Intrauterine Tube, 30°, L = 40 mm (KBE-0605-30-TSA-04)  
CT/MR Split Ring Intrauterine Tube, 45°, L = 40 mm (KBE-0605-45-TSA-04)  
CT/MR Split Ring Intrauterine Tube, 60°, L = 40 mm (KBE-0605-60-TSA-04)  
CT/MR Split Ring Intrauterine Tube, 30°, L = 60 mm (KBE-0605-30-TSA-06)  
CT/MR Split Ring Intrauterine Tube, 45°, L = 60 mm (KBE-0605-45-TSA-06)  
CT/MR Split Ring Intrauterine Tube, 60°, L = 60 mm (KBE-0605-60-TSA-06)  
CT/MR Split Ring Intrauterine Tube, 30°, L = 80 mm (KBE-0605-30-TSA-08)  
CT/MR Split Ring Intrauterine Tube, 45°, L = 80 mm (KBE-0605-45-TSA-08)  
CT/MR Split Ring Intrauterine Tube, 60°, L = 80 mm (KBE-0605-60-TSA-08)  
Cervical Stop (KBE-0508-10)  
Support Wing (KBE-0605-20)  
CT/MR Universal Rectal Retractor (KBE-1209)  
Stainless Steel Allen Wrench (KBE-7311)  
Stainless Steel Ruler, L = 15 cm (KBE-7610)  
Sterilization Tray (KBE-1107)  
Sterilization Caps, (10 pcs) (KBE-SRC093-12)

#### Required Items

3 Varian transfer tubes required. Please reach out to your Varian distributor for purchase.

## KBE-0840

### CT/MR Split Ring Applicator Combo Set, for Elekta/Nucletron transfer tubes\*

(Item numbers are included for reordering purposes)

CT/MR Split Ring, 30°, left tube (KBE-0840-30-CSA-02)  
CT/MR Split Ring, 45°, left tube (KBE-0840-45-CSA-02)  
CT/MR Split Ring, 60°, left tube (KBE-0840-60-CSA-02)  
CT/MR Split Ring, 30°, right tube (KBE-0840-30-CSA-01)  
CT/MR Split Ring, 45°, right tube (KBE-0840-45-CSA-01)  
CT/MR Split Ring, 60°, right tube (KBE-0840-60-CSA-01)  
CT/MR Split Ring Intrauterine Tube, 30°, L = 20 mm (KBE-0840-30-TSA-02)  
CT/MR Split Ring Intrauterine Tube, 45°, L = 20 mm (KBE-0840-45-TSA-02)  
CT/MR Split Ring Intrauterine Tube, 60°, L = 20 mm (KBE-0840-60-TSA-02)  
CT/MR Split Ring Intrauterine Tube, 30°, L = 40 mm (KBE-0840-30-TSA-04)  
CT/MR Split Ring Intrauterine Tube, 45°, L = 40 mm (KBE-0840-45-TSA-04)  
CT/MR Split Ring Intrauterine Tube, 60°, L = 40 mm (KBE-0840-60-TSA-04)  
CT/MR Split Ring Intrauterine Tube, 30°, L = 60 mm (KBE-0840-30-TSA-06)  
CT/MR Split Ring Intrauterine Tube, 45°, L = 60 mm (KBE-0840-45-TSA-06)  
CT/MR Split Ring Intrauterine Tube, 60°, L = 60 mm (KBE-0840-60-TSA-06)  
CT/MR Split Ring Intrauterine Tube, 30°, L = 80 mm (KBE-0840-30-TSA-08)  
CT/MR Split Ring Intrauterine Tube, 45°, L = 80 mm (KBE-0840-45-TSA-08)  
CT/MR Split Ring Intrauterine Tube, 60°, L = 80 mm (KBE-0840-60-TSA-08)  
Cervical Stop (KBE-0508-10)  
Support Wing (KBE-0605-20)  
CT/MR Universal Rectal Retractor (KBE-1209)  
Stainless Steel Allen Wrench (KBE-7311)  
Stainless Steel Ruler, L = 15 cm (KBE-7610)  
Sterilization Tray (KBE-1107)  
Sterilization Caps, (10 pcs) (KBE-SRC093-12)

#### Required Items

3 Elekta/Nucletron transfer tubes required. Please reach out to your Elekta/Nucletron distributor for purchase.

\* The applicator has been tested for mechanical compatibility with the indicated manufacturer's transfer tubes to confirm there are no internal source obstructions. Users are responsible for validating applicator compatibility, including treatment planning systems, with their afterloading equipment. Varian is a trade name/trademark of Varian Medical Systems, Inc. Elekta/Nucletron are trade names/trademarks of Elekta AB (publ). Mick and SagiNova are registered trademarks of BEBIG Medical and its subsidiaries. The mentioned products are not available in all markets. Please contact your local BEBIG Medical representative for more information.

#### Manufacturer:

Mick Radio-Nuclear Instruments, Inc.  
A BEBIG Medical Company  
521 Homestead Avenue  
Mount Vernon, NY 10550  
USA  
Phone 914 667 3999  
Fax 914 665 8834  
sales@micknuclear.com

#### Regional sales, marketing, and service in US

Klarity  
600 Industrial Parkway  
Heath, OH 43056  
USA  
Phone 740 788 8107  
Fax 740 788 8109  
info@klaritymedical.com  
www.klaritymedical.com

