

Klarity Prone Head Support INSTRUCTIONS FOR USE

GENERAL INFORMATION

The Klarity Prone Head Support is designed for patients undergoing radiation therapy.

PRODUCT DESCRIPTION

Item ID R520

The Klarity Prone Head Support is used for positioning and re-positioning patient's head and neck during radiation therapy and other disease treatments.

The Klarity Prone Head Support features a comfortable, green face cushion with cutouts for the eyes, nose, and mouth. The green face cushion is attached to an acrylic plate that has holes for indexing to standard silverman pins.

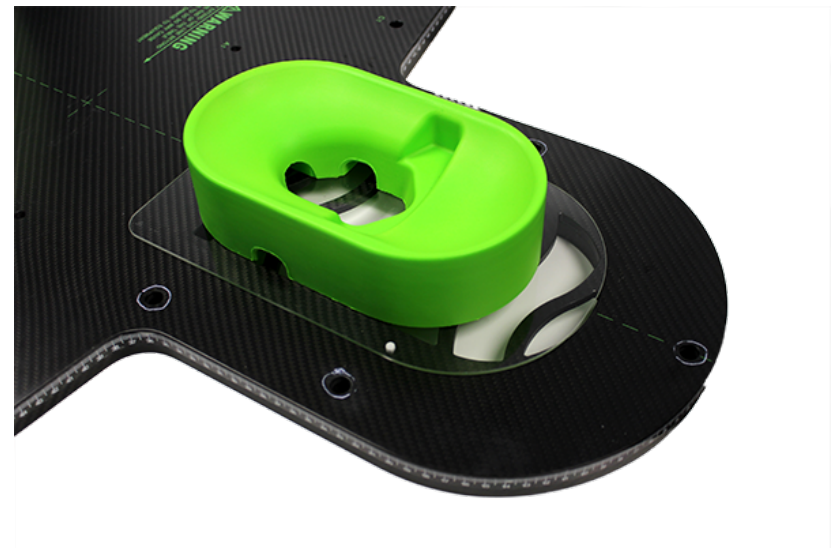
MAINTENANCE AND DISPOSAL

The Klarity Prone Head Support must be stored in a dry, clean place. Keep away from extreme heat.

The Klarity Prone Head Support can be cleaned and disinfected with soapy water or a neutral water-based antiseptic cleaner. Allow to dry completely before next use. Do not use acidic or alkali disinfectant, or abrasive detergents.

INSTRUCTIONS FOR USE

1. Attach the head support to the baseplate by matching the holes in the Prone Head Support plate to the pins on the baseplate.
2. Under the guidance of a medical professional, have the patient lie down on the baseplate and position the head and neck into a comfortable and appropriate position for treatment.



To be used by a qualified medical professional
IFU-A-009



Keep in a
cool and dry
environment



35°C
Store below
35°C (95°F)



EC REP

Lotus NL B.V.
Koningin Julianaplein 10, le Verd, 2595AA
The Hague, Netherlands
T: +31645171879 (English)
T: +31626669008 (Dutch)

Klarity Medical Products, LLC
600 Industrial Parkway
Heath, OH 43056
T: 740.788.8107 F: 740-788-8109
info@klaritymedical.com
www.klaritymedical.com